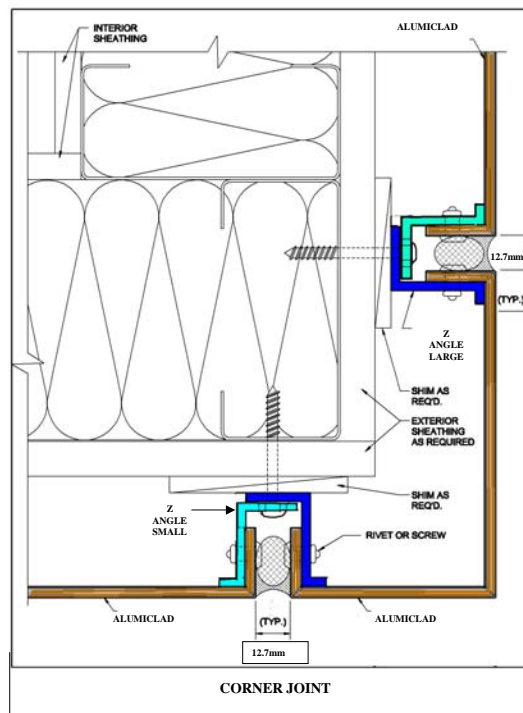
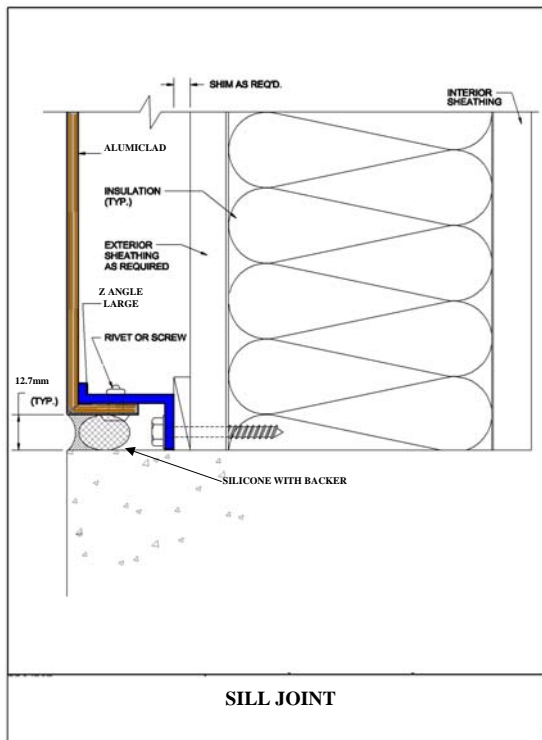
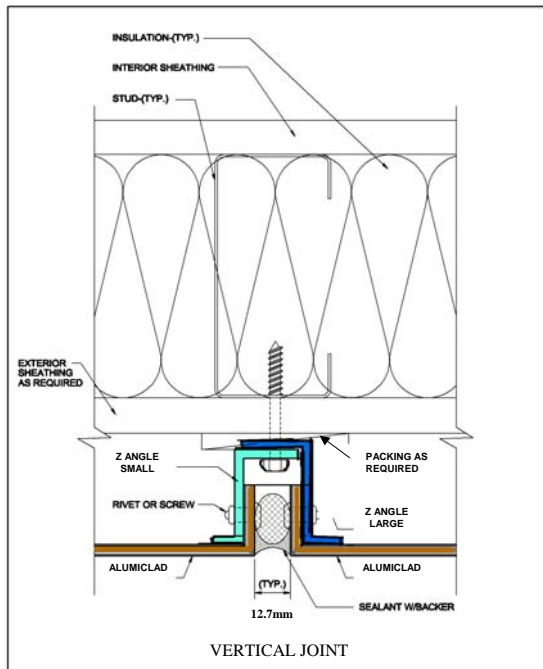




Typical Installation Methods



Installation methods depicted are examples only. Method used will depend on specifics and requirements of project. Please contact your sales consultant for further advice on fabrication and installation methods.



General Information



Screwing of Alumaticlad panels can be done so with conventional wood, sheet metal or machine screws made of stainless steel or aluminium. It is important that an allowance is made for thermal expansion and possible building movement. If screws are used made of any other metal, a barrier such as plastic washer must be used, as the interaction of other metals with aluminium can lead to corrosion.



Bonding is possible with double sided VHB tape or adhesive sealants (dependant on type of application). The double sided VHB tape or adhesive sealants do not adhere to the panel core and thus must be applied to the aluminium cover sheet only.



Riveting is possible using solid or blind rivets made of stainless steel or aluminium applied with conventional riveting tools. It is important that an allowance is made for thermal expansion and possible building movement

Linear Expansion - Alumaticlad is appropriate for uses in temperature ranges between -50 and $+80^{\circ}\text{C}$. Its linear expansion totals $0.024 \text{ mm/m}/^{\circ}\text{C}$, which amounts to 2.4 mm/m during a temperature fluctuation between -20°C and 80°C .

Storage and Handling - It is important that Alumaticlad panels are stored, handled and cleaned correctly. The panels should be stored flat and kept in a dry environment. Alumaticlad has a plastic film protecting the surface of the panel during fabrication and installation. This should be removed as soon as possible after installation completion. Arrows are printed on the film to indicate the direction of coating.

Cleaning - The level of cleaning required is typically dependant on the environmental conditions of the installation (pollution, coastal salt spray etc.) but in normal instance cleaning once a year is sufficient. The Alumaticlad coating will not normally show an appreciable amount of dirt collection and rainfall will often be sufficient to keep the surface clean. Where additional cleaning is required, low water volume at moderate pressure, mild detergent and soft sponges or rags should be used. A non-visible area should be stested first. Do not use strong alkaline, acid or abrasive cleaners. Ideally cleaning should be done on the shaded side of a building at moderate temperature.

